

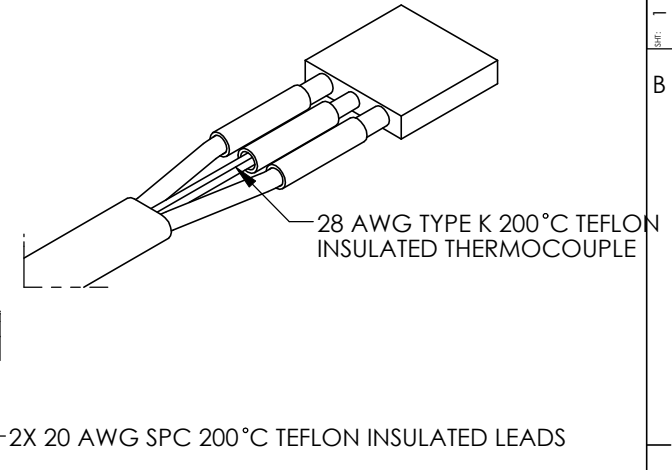
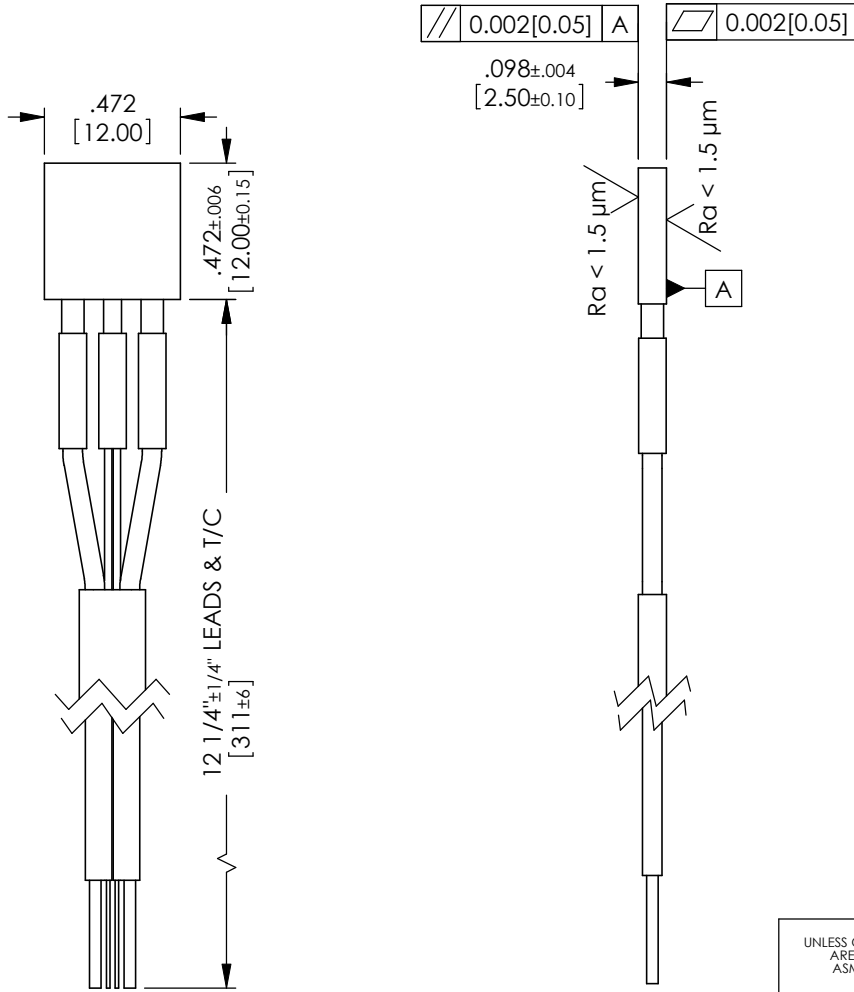
REVISION HISTORY				
REV.	ECO#	DESCRIPTION	DATE	BY
1		ORIGINAL RELEASE	10/22/2009	KAH

FORM 1 © CER-1-01-00334-Customer

B

A

FORM: TITLE BLOCK REV. A



- NOTES:
1. VOLTAGE: 48 VOLTS
  2. POWER: 200 WATTS (NOMINAL) AT 25°C.
  3. RESISTANCE:  $11.52 \pm 2.88$  OHMS AT 25°C.
  4. TCR:  $.00150 \pm .00025$  /°C.
  5. MAXIMUM TEMPERATURE: 400°C.

B

A

FINISH	
MATERIAL	AIN
CUSTOMER	WATLOW SALES

UNLESS OTHERWISE SPECIFIED, DIMENSIONS ARE IN INCHES & [MILLIMETERS] PER ASME Y14.5M-1994. TOLERANCES: FRACTIONS ±1/16" X ±.01" .XX ± 0.01" & [.X] ± 0.3mm .XXX ± 0.005" & [.XX] ± 0.13mm .XXXX ± 0.0005" & [.XXX] ± 0.013mm ANGLES ±0.5°	DWN:	KAH	10/22/09		12001 Lackland Road St. Louis, MO 63146 PHONE 314-878-4600 FAX 314-878-6814
	CONFIDENTIAL: This drawing and all information associated therewith may contain the confidential information of Watlow, or its customers or suppliers, which is subject to patent, trademark, copyright, or trade secret protection. Neither this drawing or the information associated therewith should be reproduced, used, or disclosed to others without the prior written permission of Watlow. Copyright 2004 Watlow Electric Manufacturing Co. All rights reserved.	CHK:			
	ENG:			<b>WATLOW</b> TITLE <b>ULTRAMIC 600</b> <b>ADVANCED CERAMIC HEATER</b> <b>CUSTOMER</b>	SIZE <b>A</b> DWG. NO. <b>CER-1-01-00334-Customer</b> REV <b>1</b>
	MFG:				
	QA:			THIRD ANGLE PROJECTION	SCALE <b>1.5:1</b> WEIGHT SHEET <b>1 OF 1</b>
	PUR:				
	CAD/REF. NO.	<b>CER-1-01-00334</b>			