

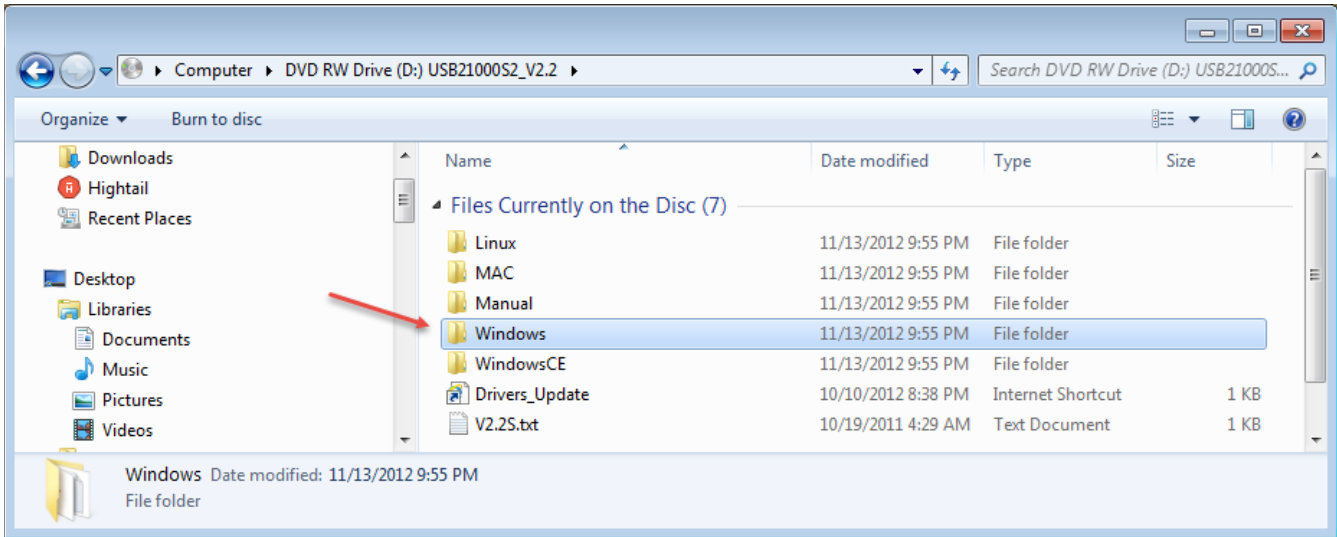
# F4T - StarTech USB to Ethernet Install

## Installation

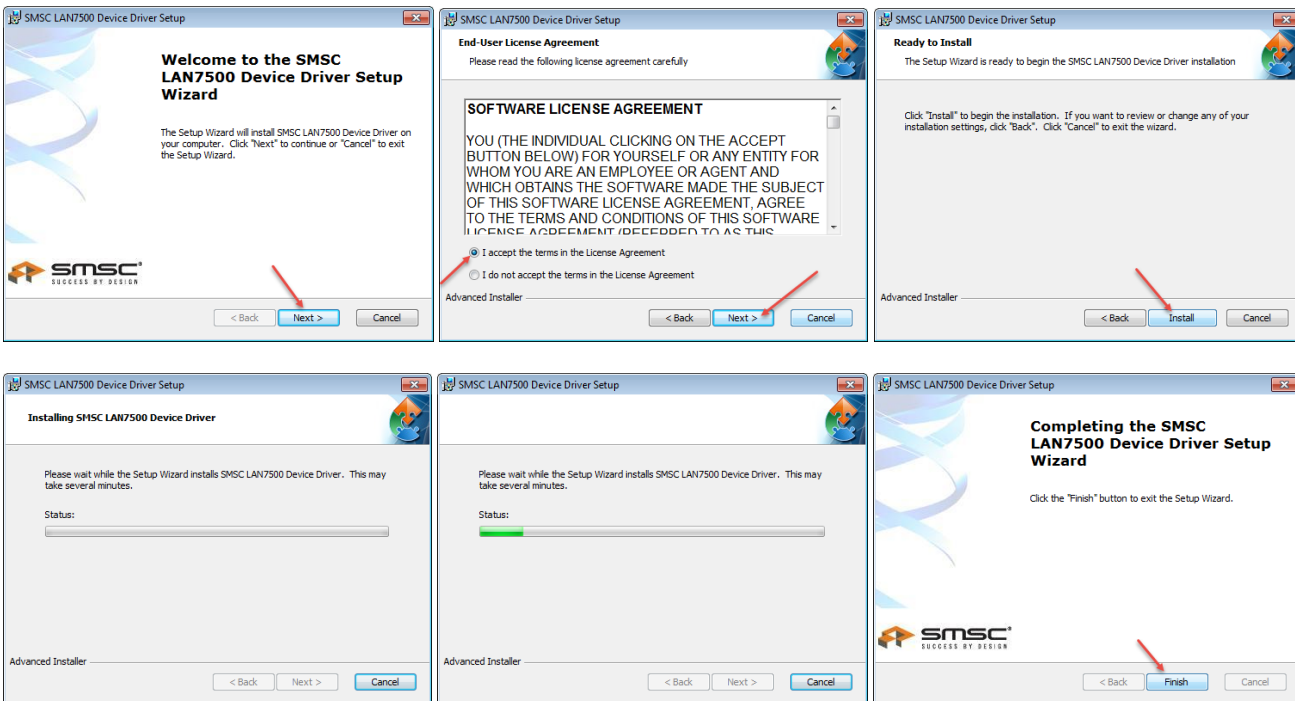
### Driver Installation

#### Windows XP/ Server 2003/ Server 2008 R2/ Vista/ 7/ 8

1. Upon starting Windows, insert the included Driver CD into the computer's CD/DVD drive.
2. AutoPlay may automatically launch and display all of the folders on the CD or give you the option to view files and folders on the CD. If not, open "My Computer" and double-click on the CD/DVD drive.
3. Navigate to the folder for your operating system version (i.e. Windows). Double-click the file "Setup.exe".



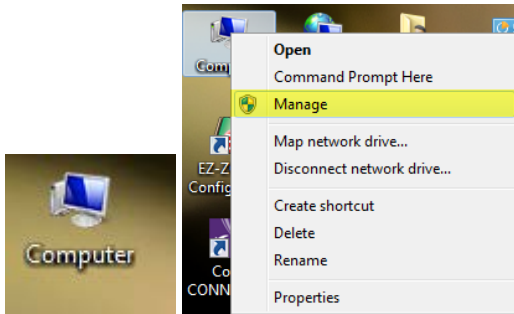
4. This will launch the driver Installation wizard. Continue through the wizard to install the driver.



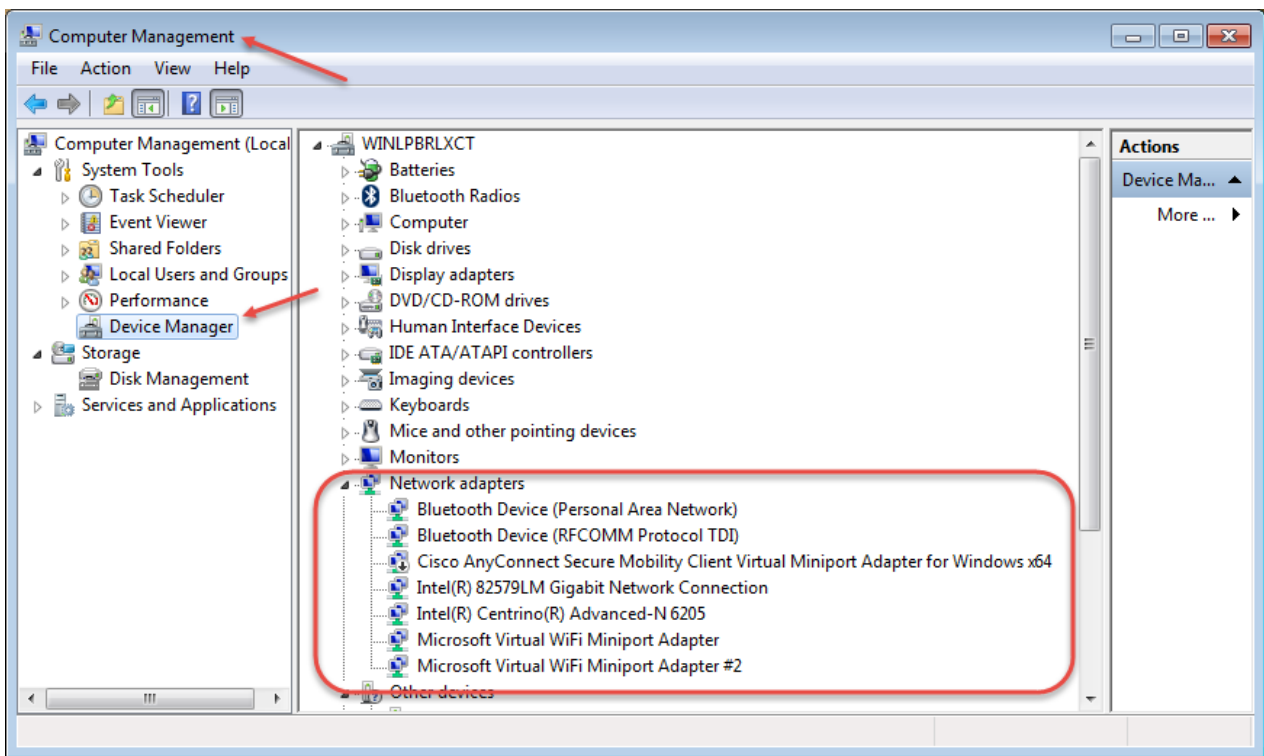
# F4T - StarTech USB to Ethernet Install

## Hardware Installation

1. Locate Device Manager in Computer Management. Right click on 'Computer' and select 'Manage'.



2. Select 'Device Manager' and expand Network adapters. The new Ethernet adapter will not display yet.

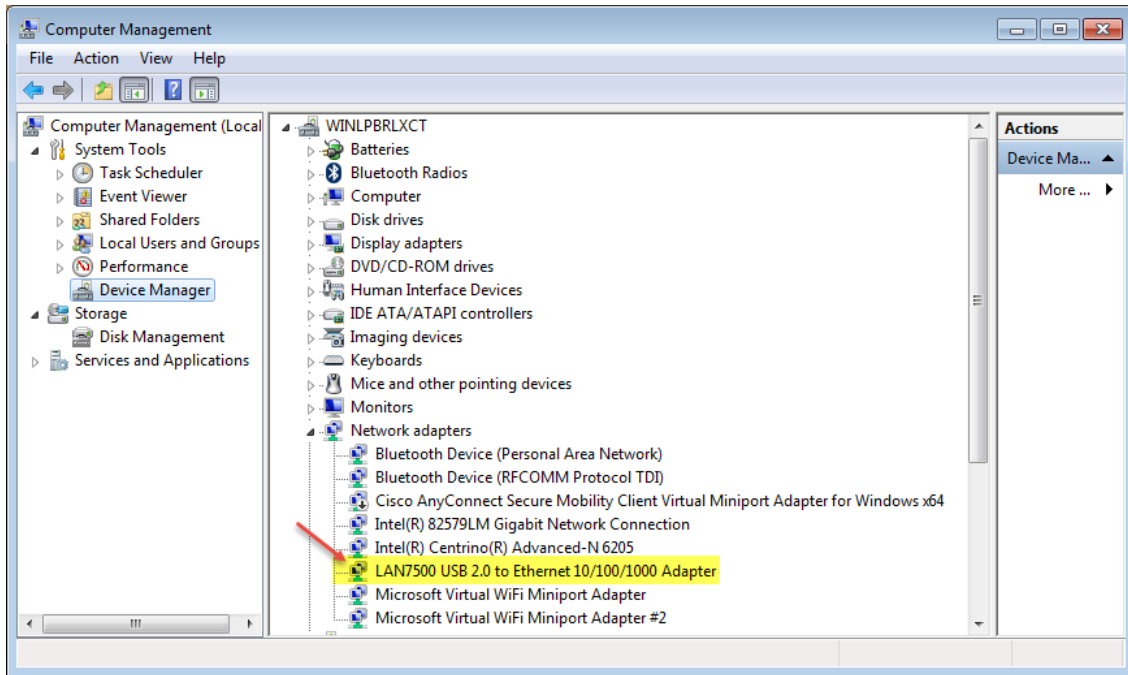


3. Plug USB to Ethernet adapter into the PC USB port. Popup on task bar indicates device driver is being installed. Icon indicates activity. When complete, popup indicates LAN700 driver is ready.



# F4T - StarTech USB to Ethernet Install

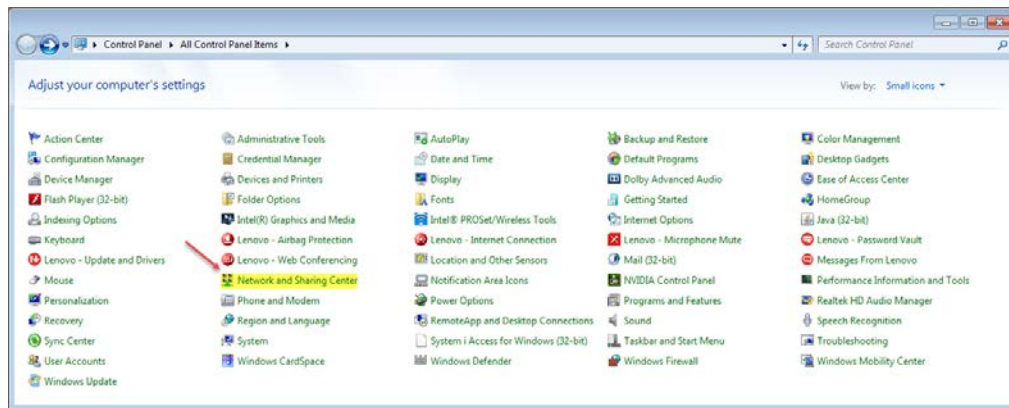
4. The new network adapter will now appear in Device Manager.



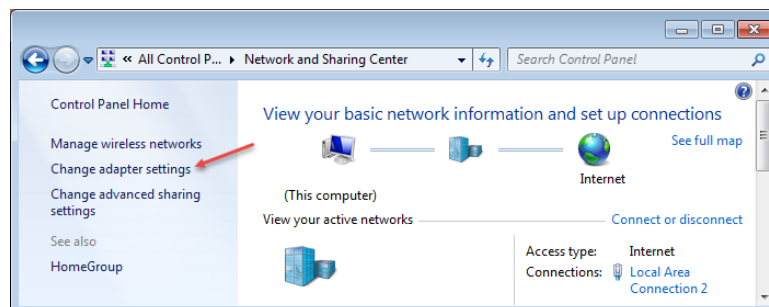
That completes the installation of the software and hardware for the Ethernet adapter.

## IP Address Assignment

1. Locate Network and Sharing Center in Control Panel. Click to open.

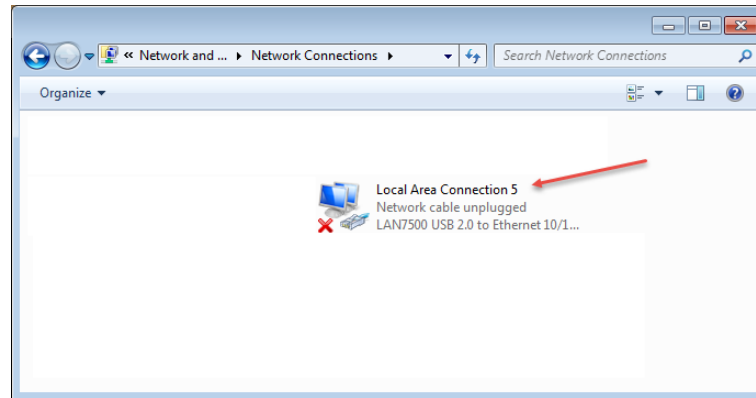


2. Click on Change adapter settings

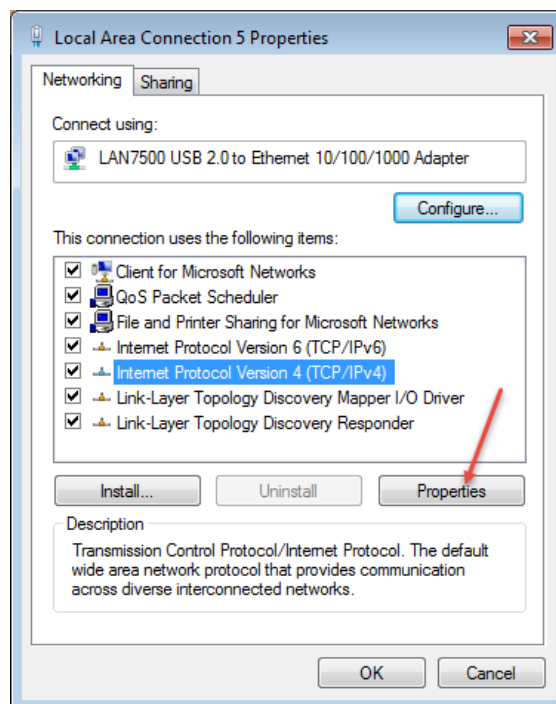


# F4T - StarTech USB to Ethernet Install

3. Right click on Local Area Connection associated with the newly installed Ethernet port.

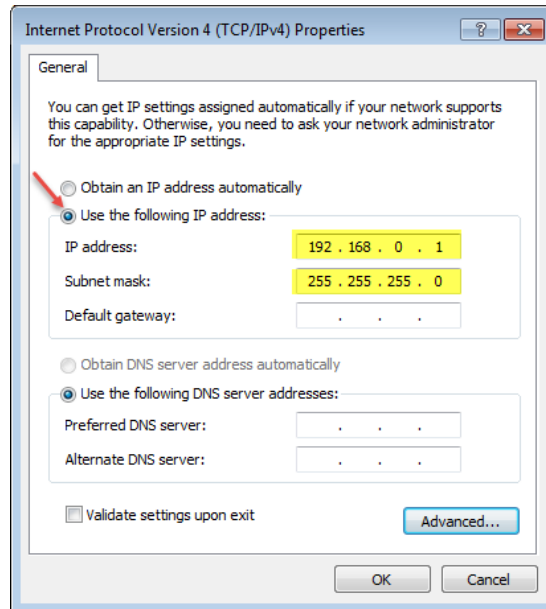


4. Select Internet Protocol Version 4 (TCP/IPv4) in Networking tab. Then select Properties.

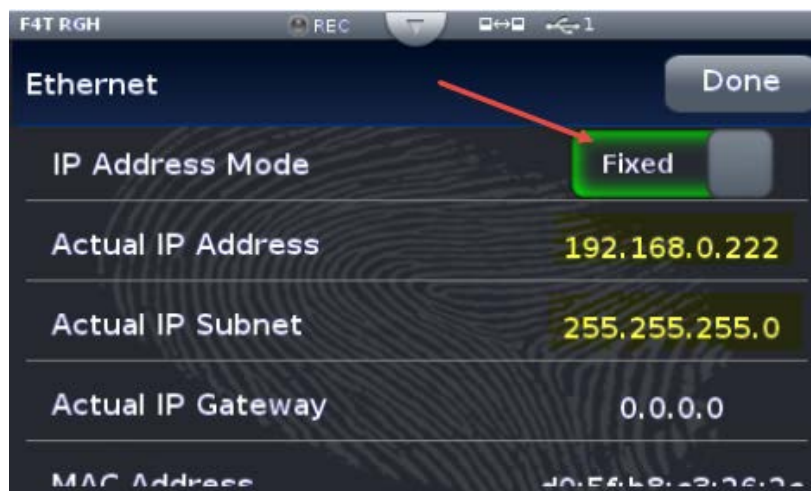


# F4T - StarTech USB to Ethernet Install

- To use a fixed IP address, select 'Use the following IP address:'  
Enter a suitable IP Address and Subnet mask. Use something like 192.168.0.x where x is any number between 0 and 255. Do not use the same IP address assigned to the F4T; rather change the last digit to make the PC unique from the F4T. The F4T uses the default IP address of 192.168.0.222 with a subnet mask of 255.255.255.0 when fixed IP addressing is selected.



- Connect an Ethernet cable between the PC and the F4T if not already connected. The link LEDs on the USB converter and on the F4T should be illuminated if the connection is good.
- Next program the F4T in 'Settings', 'Network', 'Ethernet' menu for a Fixed IP address. Enter the IP address, subnet mask and lastly cycle power to the F4T controller for the new address to be available. The entered address should appear as Actual IP Address and Actual IP Subnet.



- The computer and F4T are ready for communications. Use either Composer software or Modbus TCP software of your choice for communications via Ethernet.